



SSB SBL 151-12HR (12V 3881W)

Specification

Nominal Voltage	12V	
Nominal Power (Watt / 20°C / 10.0 V/Battery)	5 min	4868,2 W / 12V-Battery
	10 min	3881,1 W / 12V-Battery
	15 min	3166,4 W / 12V-Battery
Nominal Power (Watt / 20°C / 1.67 V/C)	5 min	811,36 W / 1.67 V/C
	10 min	646,85 W / 1.67 V/C
	15 min	527,73 W / 1.67 V/C
Nominal Capacity (10hr / 20°C / 10.0 V/Battery)	144,7 Ah	
Internal Resistance	Fully Charged battery 68°F(20°C)	≤4.5 mOhms
Self-Discharge	3% of capacity declined per month at 20°C (average)	
	SSB series batteries may be stored for up to 6 months at 68°F(20°C) and then a freshening charge is required. For higher temperatures the time interval will be shorter.	
Dimension	Length (mm / inch)	340 / 13.4
	Width (mm / inch)	173 / 6.81
	Height (mm / inch)	280 / 11.0
	Total Height (mm / inch)	287 / 11.3
Approx. Weight (Kg / lbs)	43.0 / 94.8	
Operating Temperature Range (temporarily – see our manual)	Discharge	-20~60°C
	Charge	-0~50°C
	Storage	-20~60°C
Max. Discharge Current 68°F(20°C)	1450A(5s)	
Short Circuit Current	2900A	
Charge Methods: Constant Voltage Charge 68°F(20°C)	Cycle use	2.30-2.35VPC
	Maximum charging current	0.96A
	Temperature compensation	-3mV/°C
	Standby use	2.23-2.275VPC
	Temperature compensation	-4mV/°C
Life expectancy	10~12 years at 20°C with charge voltage 2.25V/cell	

*All specifications are approximate values



Applications

- ◆ Absorbent Glass Mat (AGM) technology for efficient gas recombination of up to 99% and freedom from electrolyte maintenance or water adding.
- ◆ Not restricted for air transport-complies with IATA/ICAO Special Provision A67.
- ◆ UL-recognized component.
- ◆ Can be mounted in any orientation.
- ◆ Computer designed lead, calcium tin alloy grid for high power density.
- ◆ Long service life, float or cyclic applications.
- ◆ Maintenance-free operation.
- ◆ Low self discharge.
- ◆ Case and cover available in both standard and flame retardant ABS.



Conform to:
IEC60896-21&22 and/or IEC61427

Discharge Constant Current (Amperes at 68°F20°C)

F.V/Time	5min	8min	10min	15min	20min	30min	60min	90min	2h	3h	4h	5h	8h	10h	20h
9.60V	492,07	421,38	378,99	301,07	241,85	177,27	101,92	75,48	50,580	37,516	30,471	25,723	17,188	14,617	7,497
10.0V	455,32	395,29	355,61	285,38	225,60	169,00	97,12	71,86	49,840	37,017	30,093	25,427	17,015	14,478	7,437
10.2V	436,39	381,38	342,75	276,59	216,99	164,21	94,33	69,70	48,855	36,353	29,589	25,031	16,784	14,293	7,357
10.5V	412,17	362,31	321,84	263,63	211,06	159,58	92,78	68,14	47,553	35,472	28,920	24,505	16,476	14,047	7,250
10.8V	387,67	343,24	300,80	250,43	204,80	154,70	90,95	66,49	45,841	34,312	28,038	23,810	16,068	13,720	7,108
11.1V	361,78	322,74	278,87	236,17	197,66	148,98	88,77	64,50	43,613	32,797	26,883	22,898	15,531	13,289	6,920

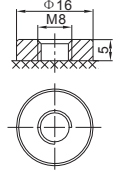
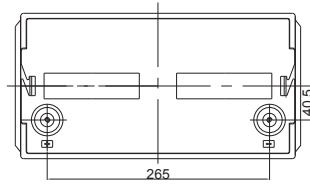
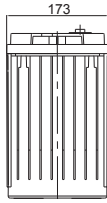
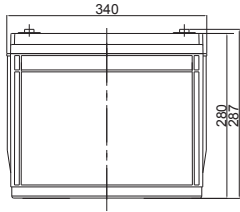
Discharge Constant Current (Watts at 68°F20°C)

F.V/Time	5min	8min	10min	15min	20min	30min	60min	90min	2h	3h	4h	5h	8h	10h	20h
9.60V	5210,7	4527,3	4096,6	3308,2	2667,1	1959,3	1130,9	840,8	583,81	436,38	356,26	301,97	204,43	174,98	89,89
10.0V	4868,2	4288,1	3881,1	3166,4	2512,1	1886,1	1088,3	808,3	579,46	433,22	353,71	300,02	202,99	173,68	89,34
10.2V	4721,5	4187,0	3785,0	3105,0	2444,8	1854,2	1069,5	793,2	569,77	426,51	348,56	295,96	200,50	171,58	88,46
10.5V	4515,4	4028,3	3599,0	2996,9	2408,0	1824,7	1065,2	785,3	557,15	417,94	341,98	290,74	197,19	168,83	87,28
10.8V	4308,1	3871,1	3413,0	2888,1	2370,4	1794,5	1059,2	777,4	539,80	405,86	332,72	283,49	192,76	165,10	85,67
11.1V	4102,1	3713,9	3227,9	2779,2	2334,4	1763,4	1055,0	769,4	516,36	389,68	320,23	273,54	186,75	160,16	83,52



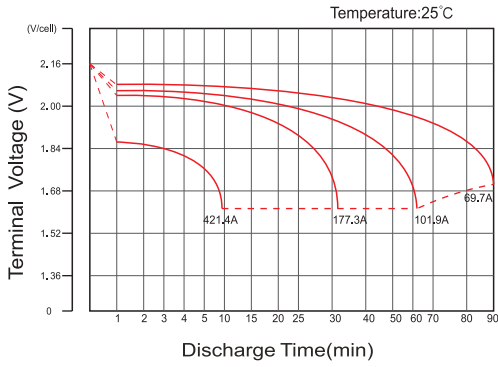
Updated: 25.03.2019

Dimensions

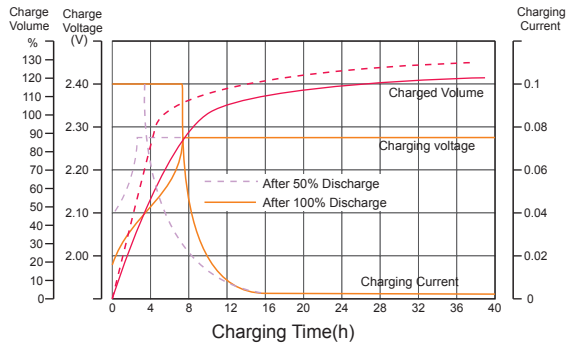


F12 Terminal

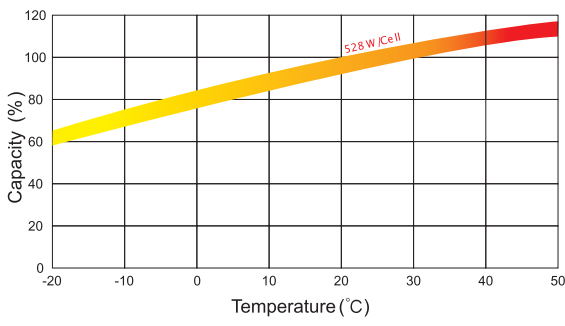
Discharge Characteristics



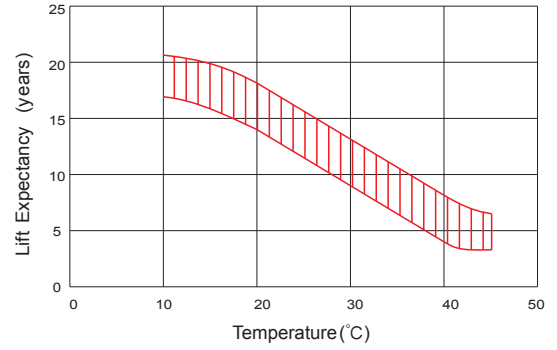
Float Charging Characteristics



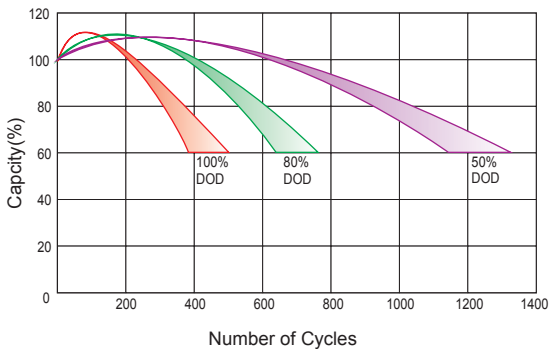
Temperature Effects in Relation to Battery Capacity



Effect of Temperature on Long Term Float Life



Cycle Life in Relation to Depth of Discharge



Self Discharge Characteristics

