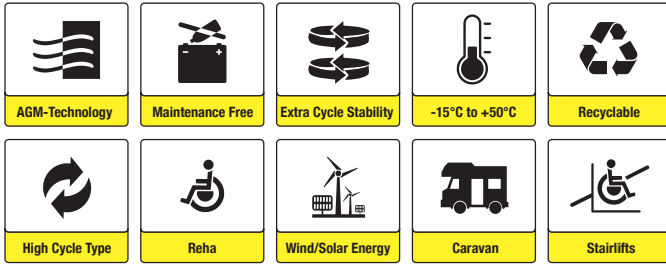




⊕⊖ **sunbattery**®

# HC12-36 M6 (12V36Ah)



## Applications

- Electric tools
- Vehicle in place of walking
- Lawn mowers
- Golf trolleys
- Portable apparatus, lights and instruments
- Electric toys
- Portable power
- Wheelchairs
- Medical equipments
- Wind/Solar energy
- Electric boats
- Caravan

## Certificates

ISO 9001 Conform to IEC60896-21&22

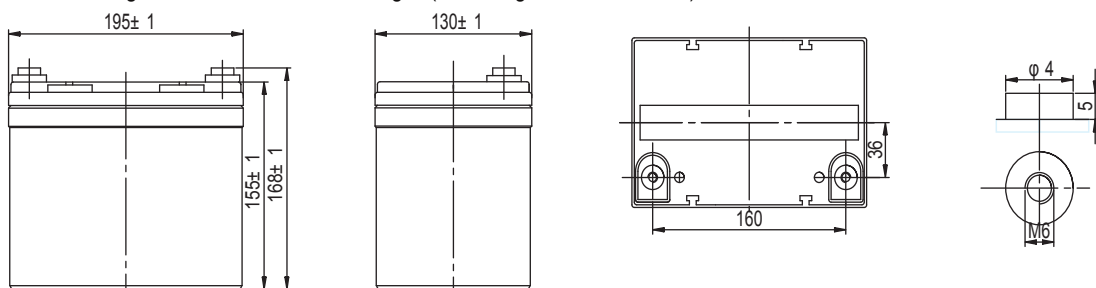
## Specifications

<b>Nominal Voltage</b>	12V	<b>Nominal Oper. Temp. R.</b>	25±3°C
<b>Nominal Capacity</b>	36.20Ah (C <sub>20</sub> , 1.75V/cell)	<b>Cycle Use</b>	Initial Charging Current less than 9.9A. Voltage 14.55V ±1% at 25°C. Temperature Coefficient -30mV/°C.
<b>Approx. Weight</b>	11.0kg	<b>Standby Use</b>	Initial Charging Current less than 9.9A. Voltage 13.65V ±1% at 25°C Temp. Coefficient -20mV/°C
<b>Terminal</b>	M6	<b>Capacity affected by Temp.</b>	40°C            103% 25°C            100% 0°C              86%
<b>Container Material</b>	ABS UL94 HB	<b>Self Discharge</b>	HC batteries may be stored for up to 6 months at 25°C and then a freshening charge is required. For higher temperatures the time interval will be shorter.
<b>Rated Capacity (25°C)</b>	36.20Ah/1.81A, 20hr, 1.75V/cell 35.30Ah/3.53A, 10hr, 1.75V/cell 31.55Ah/6.31A, 5hr, 1.75V/cell 29.13Ah/9.71A, 3hr, 1.60V/cell 24.20Ah/24.20A, 1hr, 1.60V/cell	<b>Cycle Life</b>	Approx. 650 Cycles at 50% DOD
<b>Max. Discharge Current</b>	330A (5s)		
<b>Internal Resistance</b>	Approx. 10mΩ		
<b>Operating Temp. Range</b>	Discharge:        -15~50°C Charge:            0~40°C Storage:           -15~40°C		

## Dimensions

### ■ M6 Terminal

Unit: mm | Dimensions: 195 Length X 130 Width X 155 Height (168 Height incl. Terminal)





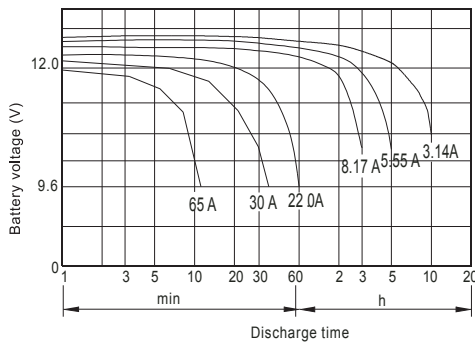
### Constant Current Discharge (Amperes) at 25°C

End Point	5min	10min	15min	30min	1h	3h	5h	10h	20h
1.60V/cell	129	92.5	66.9	41.7	24.2	9.71	6.52	3.61	1.96
1.65V/cell	123	88.9	66.2	41.1	28.7	9.63	6.48	3.65	1.94
1.70V/cell	115	83.5	65.4	40.2	23.1	9.42	6.40	3.62	1.85
1.75V/cell	107	78.3	64.10	39.1	22.3	9.35	6.31	3.53	1.81
1.80V/cell	95	73.8	63.25	38.4	21.15	9.02	6.28	3.49	1.75

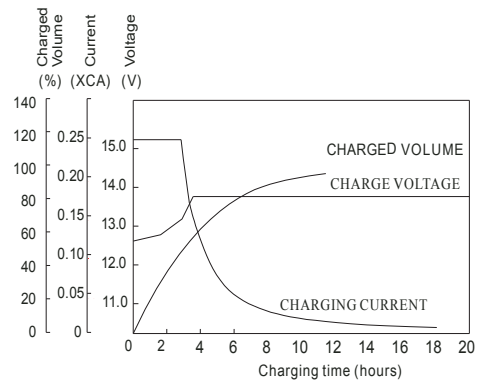
### Constant Power Discharge (Watts/cell) at 25°C

End Point	5min	10min	15min	30min	1h	3h	5h	10h	20h
1.60V/cell	233.67	173.67	138.83	81.33	48.00	20.50	13.08	7.72	3.97
1.65V/cell	230.17	166.20	135.79	80.00	47.50	20.17	12.93	7.63	3.92
1.70V/cell	214.00	157.00	130.50	78.33	46.83	20.02	12.80	7.45	3.85
1.75V/cell	202.50	149.17	125.56	77.02	46.17	19.67	12.65	7.33	3.80
1.80V/cell	187.50	141.50	122.83	76.00	45.50	19.17	12.47	7.20	3.72

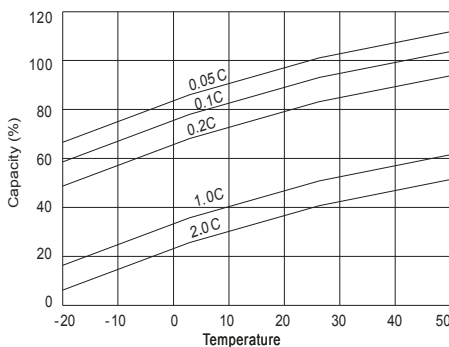
### Discharge Characteristics



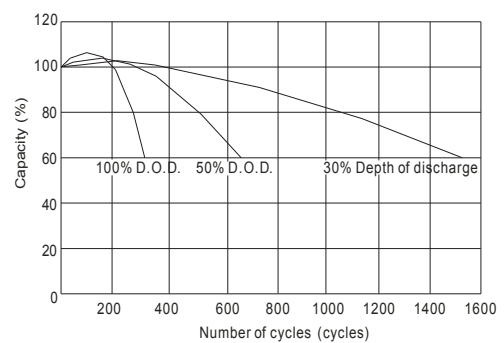
### Float Charging Characteristics



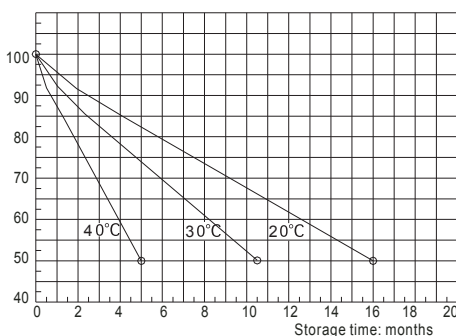
### Temperature Effects in Relation to Battery Capacity



### Cycle Service Life in Relation to Depth of Discharge



### Self Discharge Characteristics



### Temperature Effects on Float Life

