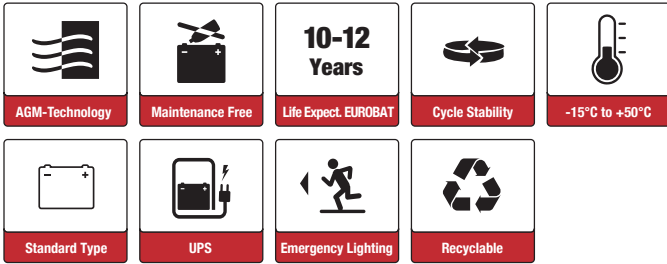




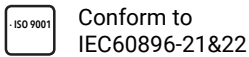
SBL33-12i (12V33Ah)



Applications

- Uninterruptable Power Supply (UPS)
- Electric Power System (EPS)
- Emergency backup power supply
- Emergency light
- Railway signal
- Alarm and security system
- Communication power supply
- DC power supply

Certificates



Specifications

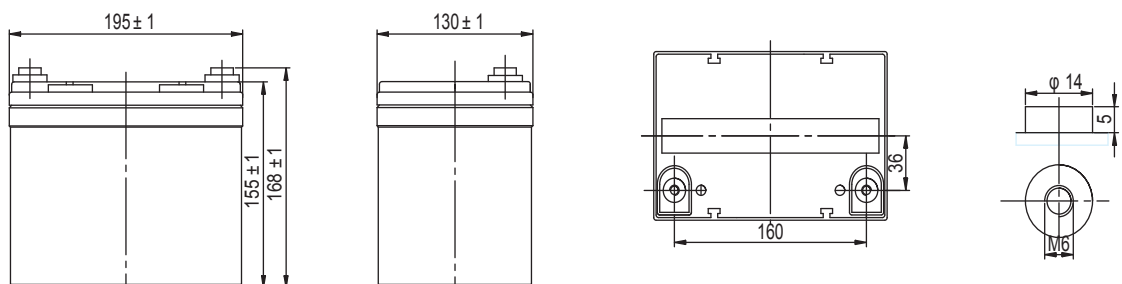
| | | | |
|---|---|-----------------------------------|---|
| Nominal Voltage | 12V | Nominal Oper. Temp. R. | 20±3°C |
| Nominal Capacity | 33.0Ah (C ₁₀ , 10.8V) | Operating Temp. Range | Discharge: -20~50°C Charge: -10~50°C Storage: -20~50°C |
| Approx. Weight | 9.7kg | Standby Use | No limit on Initial Charging Current. Voltage 2.295 V/cell at 20° C. Temperature Coefficient -20mV/°C. |
| Terminal | M6 | Capacity affected by Temp. | 40°C 103% 25°C 100% 0°C 86% |
| Container Material | ABS UL94 HB | Self Discharge | SSB batteries may be stored for up to 6 months at 20°C and then a freshening charge is required. For higher temperatures the time interval will be shorter. |
| Rated Capacity (20°C) | 35.0Ah/1.75A,20hr, 10.8V 33.0Ah/3.30A,10hr, 10.8V 31.36Ah/3.92A,8hr, 10.5V 27.90Ah/5.58A,5hr, 10.5V 24.75Ah/8.25A,3hr,10.5V 22.3Ah/22.3A,1hr, 9.6V | Life Expectancy | 10-12 years according to EUROBAT |
| Max. Discharge Current | 330A (5s) | | |
| Internal Resistance / Impedance (1kHz) | Approx. 12mΩ | | |



Dimensions

■ M6 Terminal

Unit: mm | Dimensions: 195 Length X 130 Width X 155 Height (168 Height incl. Terminal)



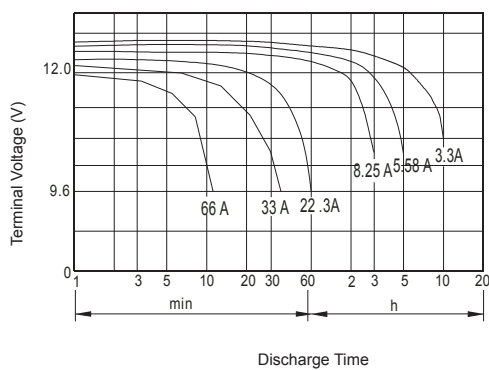
Constant Current Discharge (Amperes) at 20°C

| F.V/Time | 10min | 15min | 30min | 1h | 1.5h | 2h | 3h | 5h | 6h | 8h | 10h | 20h |
|------------|-------|-------|-------|------|------|-------|------|------|------|------|------|------|
| 1.60V/cell | 69.3 | 57.1 | 32.6 | 22.3 | 16.6 | 12.8 | 9.08 | 6.3 | 5.38 | 4.15 | 3.36 | 1.81 |
| 1.65V/cell | 65 | 54.1 | 31.3 | 21.9 | 16.3 | 12.6 | 8.97 | 6.25 | 5.23 | 4.07 | 3.35 | 1.79 |
| 1.70V/cell | 60 | 51.4 | 30.4 | 21.2 | 15.8 | 12.1 | 8.45 | 6.15 | 5.09 | 3.99 | 3.32 | 1.78 |
| 1.75V/cell | 56.1 | 47.8 | 29.4 | 20.3 | 15.1 | 11.65 | 8.25 | 5.58 | 4.95 | 3.92 | 3.31 | 1.76 |
| 1.80V/cell | 51.4 | 44.8 | 28.8 | 19.8 | 14.8 | 11.42 | 8.18 | 5.5 | 4.81 | 3.85 | 3.30 | 1.75 |

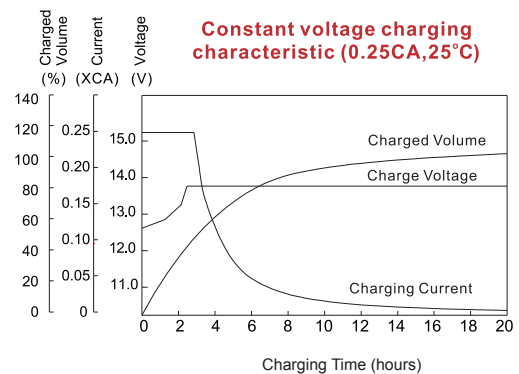
Constant Power Discharge (Watts/cell) at 20°C

| F.V/Time | 10min | 15min | 30min | 45min | 1h | 1.5h | 2h | 3h | 5h | 8h |
|------------|-------|-------|-------|-------|------|------|------|------|------|------|
| 1.60V/cell | 122 | 100 | 65.3 | 45.5 | 40.9 | 30.4 | 23.3 | 17.4 | 12.2 | 6.48 |
| 1.65V/cell | 116 | 98.6 | 61.7 | 44.2 | 40.5 | 30.2 | 23.1 | 17.3 | 11.9 | 6.32 |
| 1.70V/cell | 110 | 95.7 | 61.7 | 43.5 | 39.9 | 29.6 | 22.6 | 16.8 | 11.5 | 6.1 |
| 1.75V/cell | 104 | 92 | 58 | 42.5 | 39.1 | 28.9 | 21.8 | 16 | 11.3 | 6 |
| 1.80V/cell | 97.7 | 89 | 56 | 41.5 | 38.3 | 28.1 | 21 | 15.2 | 11 | 5.84 |

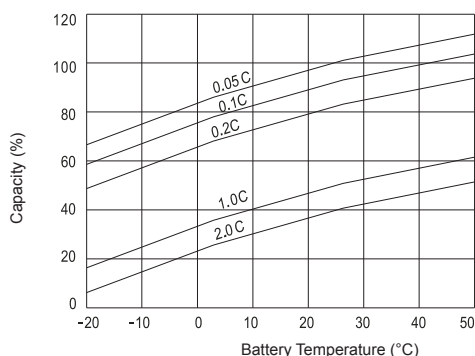
Discharge Characteristics



Float Charging Characteristics



Temperature Effects in Relation to Battery Capacity



Effect of Temperature on Long Term Float Life

