

SBL150-12HR V0 Xtreme (12V33Ah)

Applications

- Uninterruptable Power Supply (UPS)
- Electric Power System (EPS)
- Emergency backup power supply
- Emergency light
- Railway signal
- Alarm and security system
- Communication power supply
- DC power supply

Certificates



Conform to
IEC60896-21&22



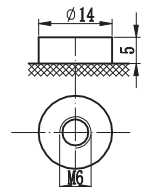
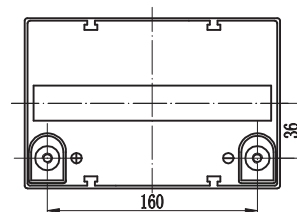
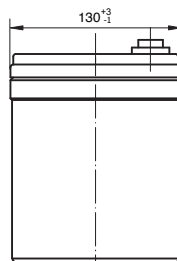
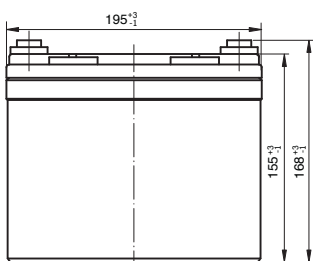
Specifications

Nominal Voltage	12V	Operating Temp. Range	Discharge: -20~60°C
Nominal Capacity	33Ah (C ₁₀ , 1.8V/cell)		Charge: -10~45°C
Approx. Weight	11.5kg		Storage: -20~60°C
Terminal	M6	Standby Use	Initial Charging Current less than 10.5A.
Container Material	ABS UL94 V0		Voltage 2.3025 V/cell at 20°C.
Rated Capacity (20°C)	33Ah/3.3A, 10hr, 10.8V		Temperature Coefficient -20mV/°C.
	28.25Ah/5.65A, 5hr, 10.5V	Capacity affected by Temp.	30°C 103%
	25.92Ah/8.64A, 3hr, 10.5V		20°C 100%
	30.3Ah/30.3A, 1hr, 9.6V		0°C 86%
Max. Discharge Current	330A (5s)	Self Discharge	SSB batteries may be stored for up to 6 months at 20°C and then a freshening charge is required. For higher temperatures the time interval will be shorter.
Internal Resistance / Impedance (1kHz)	Approx. 7.0mΩ	Life Expectancy	>12 years according to EUROBAT
Nominal Oper. Temp. R.	20±2°C		

Dimensions

■ M6 Terminal

Unit: mm | Dimensions: 195 Length X 130 Width X 155 Height (168 Height incl. Terminal)



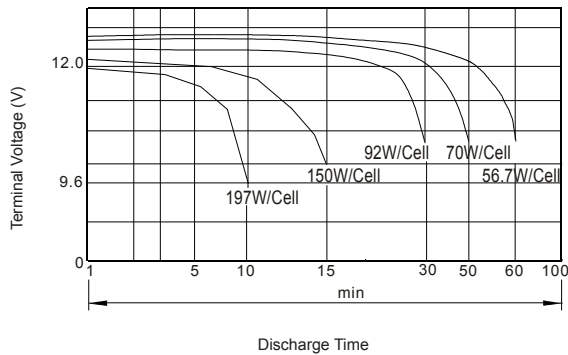
Constant Current Discharge (Amperes) at 20°C

End Voltage	3min	5min	10min	15min	20min	25min	30min	45min	60min	90min	3h	5h	8h	10h
1.60V/cell	234	173	116	87	71.4	61.0	52.9	38.6	30.3	17.25	9.31	6.03	4.03	3.43
1.65V/cell	216	162	111	83	69.3	59.1	51.3	37.7	30.1	16.76	9.04	5.90	3.94	3.40
1.67V/cell	209	158	109	82	68.4	58.4	50.6	37.3	30.0	16.59	8.98	5.82	3.90	3.40
1.70V/cell	194	149	104	80	66.4	57.1	49.9	36.8	29.8	16.39	8.88	5.76	3.85	3.37
1.75V/cell	175	137	98	76	64.0	54.8	48.0	35.4	29.2	16.02	8.64	5.65	3.78	3.33
1.80V/cell	158	124	91	71	60.0	51.2	45.0	33.9	28.1	15.60	8.39	5.51	3.70	3.30

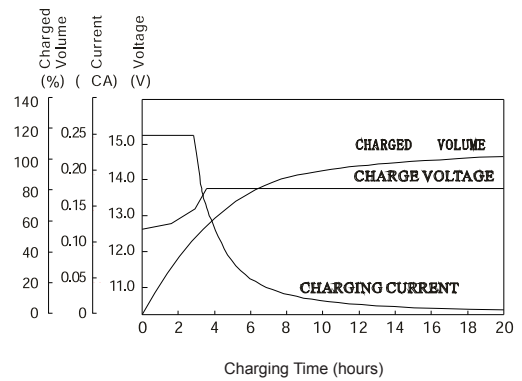
Constant Power Discharge (Watts/cell) at 20°C

End Point	3min	5min	10min	15min	20min	25min	30min	45min	60min	90min	3h	5h	8h	10h
1.60V/cell	346	267	197	152	131	113	101	74.2	58.5	31.52	18.52	11.93	7.88	6.53
1.65V/cell	333	261	191	151	129	111	99	73.4	58.4	30.68	18.08	11.68	7.71	6.40
1.67V/cell	328	259	189	150	128	110	98	73.1	58.3	30.26	17.83	11.55	7.63	6.34
1.70V/cell	317	248	183	146	126	108	94	71.9	58.1	29.85	17.58	11.43	7.56	6.27
1.75V/cell	293	234	171	137	119	104	92	70.0	56.7	29.01	17.14	11.19	7.39	6.14
1.80V/cell	287	224	164	131	115	100	89	67.4	54.7	28.22	16.65	10.89	7.23	6.01

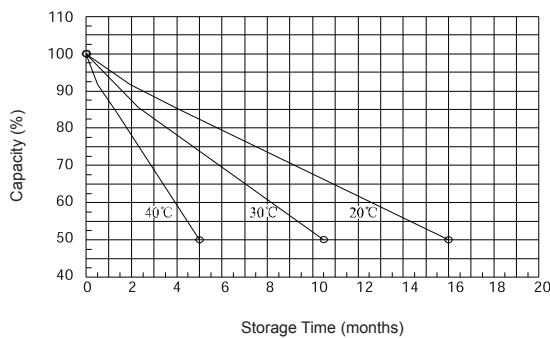
Discharge Characteristics



Float Charging Characteristics



Self-Discharge Characteristic



Effect of Temperature on Long Term Float Life

