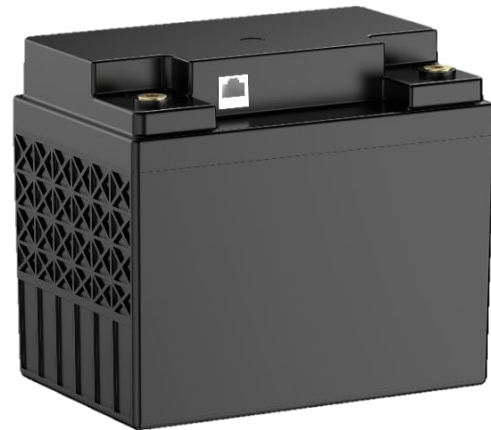


Lithium Iron Phosphate (LiFePO₄)

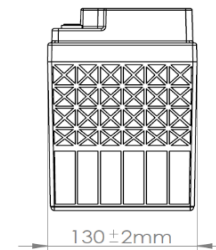
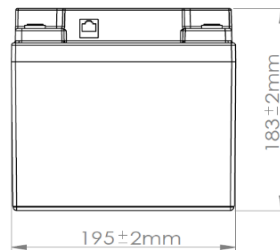
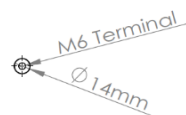
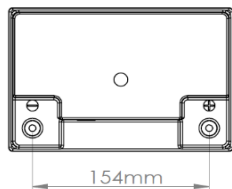
LiBrick S24-20 CAN

Made under German QC Quality Control	Li-Ion Standard	Extra Cycle Stability	High Discharge	BMS Inside
Mobile Workstations	Reha & Care	UPS/Backup	AGV	Storage



Main Applications

- + Mobile Workstations
- + Reha & Care
- + UPS/Backup
- + AGV
- + Storage
- + Medical Devices
- + Emergency Lights



Electrical Parameter	
Cell type	26650
Technology	Lithium Iron Phosphate (LFP)
Configuration	8S5P
Nominal voltage	25,6 V
Rated capacity	20 Ah
Rated energy	512 Wh
Internal resistance	50 mΩ
Interconnectable (serial)	2
Interconnectable (parallel)	4

Mechanical Parameter	
Length (±2mm)	195 mm
Width (±2mm)	130 mm
Height (±2mm)	183 mm
Weight	4500 g
Volumetric energy density	110,4 Wh/l
Gravimetric energy density	113,8 Wh/kg
Housing	ABS; V0 - UL94
Protection level	(not certified) IP56
Special features	designed for highest safety
Life span* >	5 Years

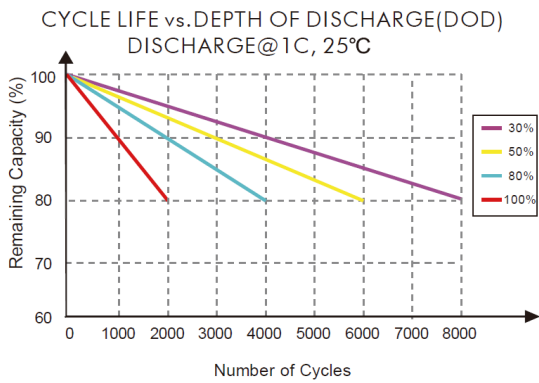
Charge Parameter	
Charging methode	CC-CV
Recommended charge current	10 A
Maximum charge current	20 A
End of charge voltage	28,4 V
Temperature range charge	0 - 45 °C
Temperature range storage	0 - 40 °C
Humidity range	5-85°C %RH
Recuperation	/ A
Cycle life* at 80% DOD	4000

Discharge Parameter	
Constant discharge current	40 A
Peak discharge current	80 A
Duration of peak discharge	5 s
End of discharge voltage	20 V
Temperature range discharge	-20 - 60 °C
Discharge current @ < -20°C	4 A
Discharge current @ -15°C	10 A
Discharge current @ > 0°C	20 A
Capacity drop at low temp.	80% (-10°C/0,2C) 50% (-20°C/0,2C)

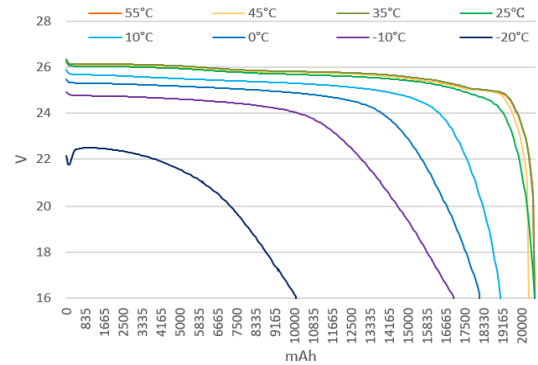
BMS Parameter		
Short circuit protection	10-500	μS
Over current protection	90±3%	A
Over current protection	500-1500	mS
Deep discharge protection cell	2,2±0,1	V
Deep discharge protection	500-1500	mS
Over voltage protection cell	3,75±0,05	V
Over voltage protection	500-1500	ms
Over temp. protection >	70 (68°C Alarm)	°C
Balancing start voltage >	3,2±0,05	V
Board consumption (sleep)	800	μA

Interconnector / Interfaces	
Charge	M6
Discharge	M6
Data	RS485 over RJ45
Communication	CAN Bus
Communication protocol	A, Rev.1

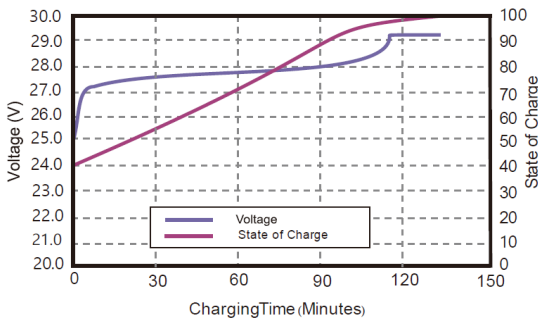
M6	RJ45



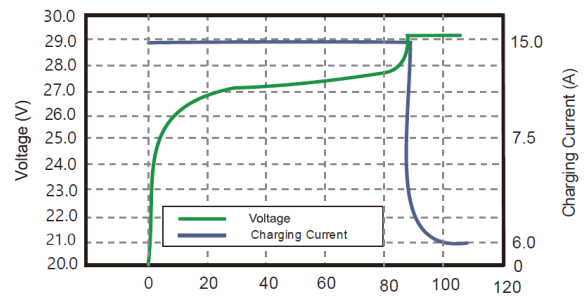
DISCHARGE CAPACITY at VARIOUS TEMPERATURES DISCHARGE @1C



STATE OF CHARGE CURVE @1C, 25°C



CHARGING CHARACTERISTICS @1C, 25°C



Suitable Accessories	
USB CAN Adapter	

Compliance	
UN38.3	Yes
RoHS	Yes
REACH	Yes
CE	Yes
UL1642	Cell
IEC 62133-2:2017	Ready
UL2054	Ready

*Values are approximations only. Cycle life and life span significantly depend on usage patterns and ambient conditions.

All information and data in this document or otherwise made available are subject to change. The recipient is responsible for checking and verifying the extent to which the information contained is applicable. At the time of publication, all information given herein is believed to be accurate and reliable, but it is presented without guarantee, warranty, or responsibility of any kind, expressed or implied.

The information is intended for use only by partners who have the requisite experience and capability to determine the correct products for their application. Any technical advice inferred from this information or otherwise provided by Battery-Kutter with reference to the use of products provided is given without regard, and Battery-Kutter assumes no obligation or liability for the advice given or results obtained.

Specifications subject to change without notice. This data sheet becomes invalid upon the release of a new version.