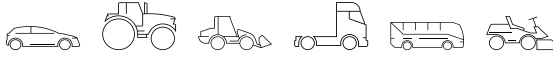


# Starter Batteries

**START** POWER



## intAct Start-Power

Calcium or hybrid battery (Ca/Ca or Sb/Ca)



**intAct**  
BATTERY - POWER

## TOP PERFORMANCE AT A GREAT PRICE

Designed for performance and extreme high current capability offering perfect value for money. For almost all passenger cars, coaches, trucks and agricultural machinery. Our recommendation for a solid battery when cost is a major consideration.

- » Durable, safe and reliable.
- » **2 versions:** Calcium battery (Ca/Ca) wet charged (GUG) or dry-charged (TV) hybrid battery (Sb/Ca).
- » Low maintenance or maintenance free.
- » Wet charged version in part with double lid for increased leak protection and vapour condensation.
- » All truck/utility and Asia models only low-maintenance (with vent caps on top).
- » Not suitable for vehicles with charging voltage 14.8 volts.

## START POWER



Artnum.

53211GUG

Japan-Code

keine

Volt

12V

Capacity

32 AH (c20)

CCR - 18°C (EN)

220 A (EN)

Electrolyte

diluted sulphuric acid

Electrolyte density

1,28 +/- 0,01 Kg/l (25° C)

Size (LxWxH)

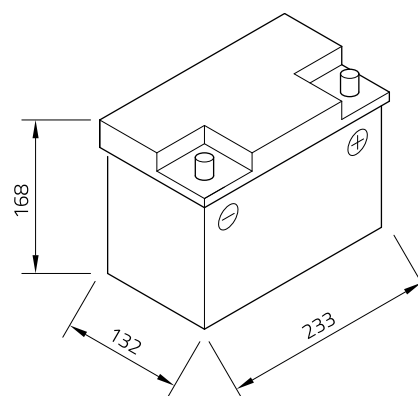
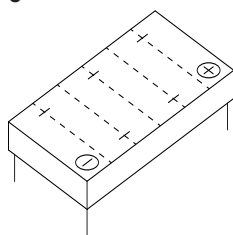
233 x 132 x 168 mm

Weight

9,8 kg

Pos. of Terminal

0

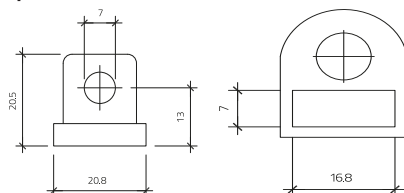


Technology

Calcium or hybrid battery (Ca/Ca or Sb/Ca)

Terminal

4



Base plate

-

As of 23.11.2022