

# Starter Batteries

**PREMIUM** POWER



## intAct Premium-Power

Maintenance-free calcium battery (Ca/Ca) | wet charged



**intAct**  
BATTERY - POWER

## 30% EXTRA STARTING POWER

More suitable for highly equipped vehicles with many electrical consumers and in intensive city traffic. With minimal self-discharge, particularly safe and temperature resistant. Our recommendation for vehicles with a lot of equipment, especially if short distances are driven frequently.

- 30% more cranking power than standard starter battery with the same case size.
- » **Fast charging.** Up to 1.5 times shorter charging time due to faster current consumption than standard starter batteries of the same box size.
- » **Double lid for increased leakage protection and vapour condensation** (gaseous electrolyte condenses in the labyrinth lid and remains in the circuit).
- » 2 versions: For **passenger cars (also Asia models)** and for **trucks**.
- » **Premium-Power Truck vibration resistant V4** (HVR = High Vibration Resistance).



Artnum.

PP45MF

Japan-Code

keine

Volt

12V

Capacity

45 AH (c20)

CCR - 18°C (EN)

450 A (EN)

Electrolyte

diluted sulphuric acid

Electrolyte density

1,28 +/- 0,01 Kg/l (25° C)

Size (LxWxH)

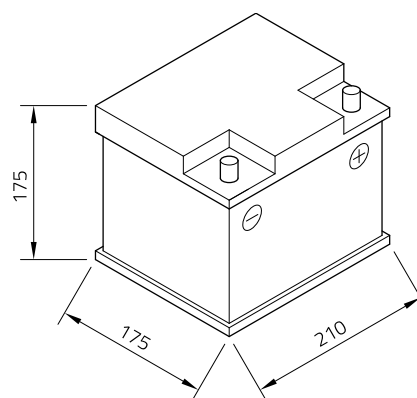
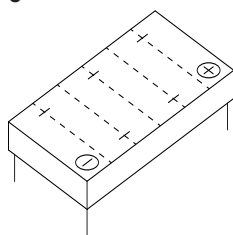
210 x 175 x 175 mm

Weight

12,2 kg

Pos. of Terminal

0

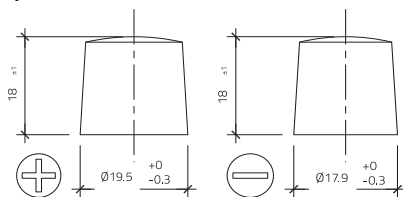


Technology

Maintenance-free calcium battery (Ca/Ca) | wet charged

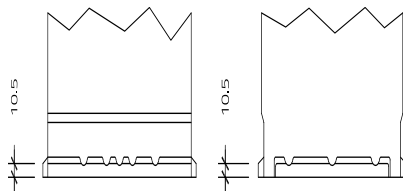
Terminal

1



Base plate

B13



As of 23.11.2022